

SERIES ME

SLIM AND STRONG

An elegant solution

We have developed the thinnest electromagnetic lock on the market. With only 30mm width it fits on the most sophisticated of your interior decoration without losing holding force.

Not only is the Series ME the smallest, it's also the most sensible to unwanted intruders, being able to detect the smallest tampering attempts.

We like details, for this reason, each unit comes certified with its real closing force and we have accomplished the lowest magnetic remanence.

30 mm

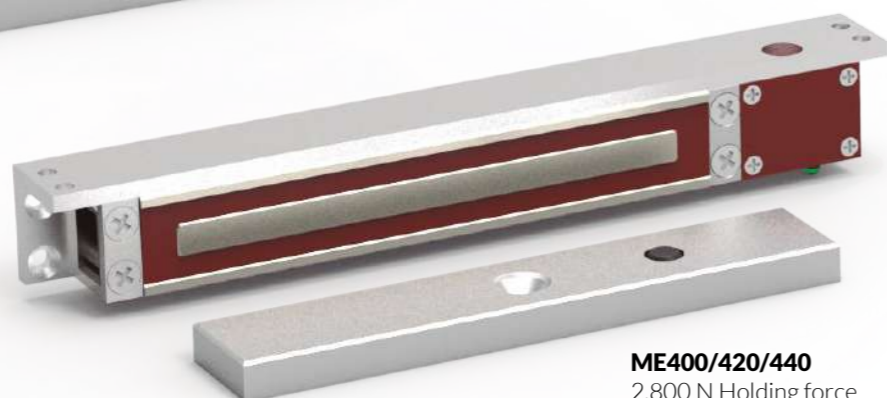


ELECTROMAGNETIC
LOCKS

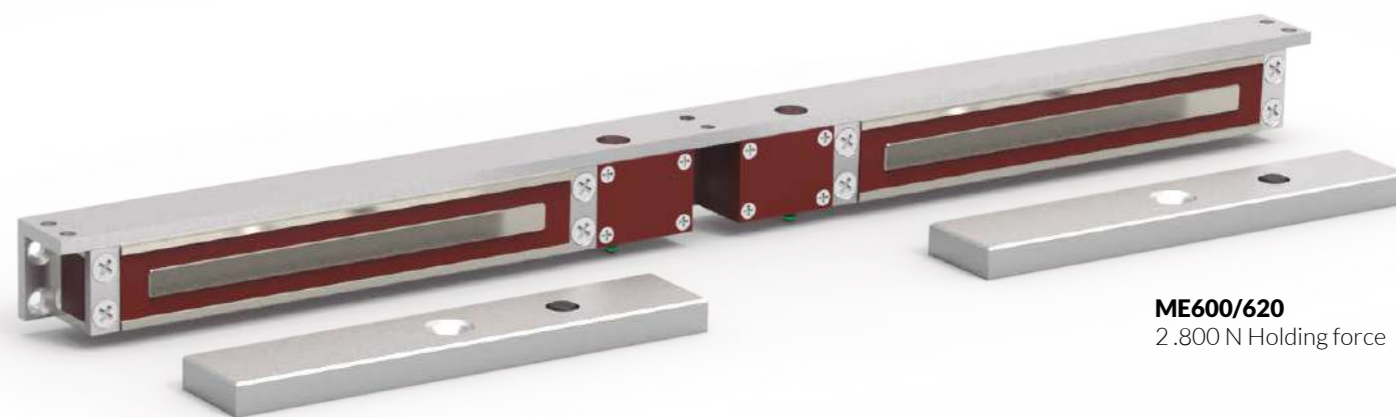
ME



ME500/510
WATERPROOF IP65
2.500 N Holding force



ME400/420/440
2.800 N Holding force



ME600/620
2.800 N Holding force



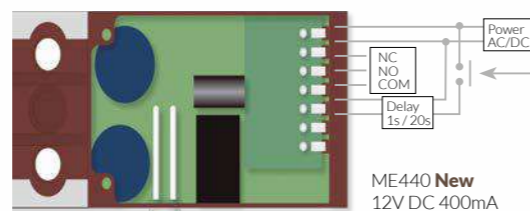
ME200/210
2.800 N Holding force
For wood installation

ME201/211
2.800 N Holding force
For metal installation

Counterplate mounting kit
included L and Z installation



ME440: the smart one. The maglock has been fitted with an electric circuit that allows it to activate a timer. Also this electromagnetic lock has an automatic voltage detection system on a broader voltage span (9-24V AC/DC).





L

Z

U

F

S

E

Outward opening doors Inward opening doors Glass doors Fire doors Sliding doors Embedded doors

Holding force
Manual voltage change
12 / 24 V DC
Automatic voltage change
9 - 24 V AC/DC
Embedded
Surface
Door Status (Reed)
LED
Timer:
1 to 20 s (6 by default)

| Model | Holding force | Manual voltage change | Automatic voltage change | Embedded | Surface | Door Status (Reed) | LED | Timer | L | Z | U | F | S | E |
|-----------------------------|---------------|-----------------------|--------------------------|----------|---------|--------------------|-----|-------|------|---------|---------|--------|------|------|
| ME200 ME210 | 2.800 N | Yes | - | Yes | - | - | - | - | - | - | - | - | MES1 | MEE1 |
| ME201 ME211 | 2.800 N | Yes | - | Yes | - | - | - | - | - | - | - | - | MES1 | MEE1 |
| ME400 ME420 ME440 | 2.800 N | Yes | - | - | Yes | - | - | - | MEL1 | MEZ1 | MEU1 | MF1 | - | - |
| ME500 ME510 | 2.500 N | Yes | - | - | Yes | - | - | - | MEL1 | MEZ1 | - | - | - | - |
| ME600 ME620 | 2.800 N x2 | Yes | - | - | Yes | - | - | - | MEL3 | MEZ1 x2 | MEU1 x2 | MF1 x2 | - | - |

6W / 1,55 kg
12 V DC (500 mA) 24 V DC (250 mA)

6W / 1,55 kg
12 V DC (500 mA) 24 V DC (250 mA)

6W / 1,74 kg
12 V DC (500 mA) 24 V DC (250 mA)

IP65
Waterproof
6W / 1,78 kg
12 V DC (500 mA) 24 V DC (250 mA)

6W / 3,48 kg
12 V DC (500 mA x 2) 24 V DC (250 mA x 2)

