

4 radially arranged tumbler pin rows with up to 22 pairs of pins – prevent attack using the bumping or picking methods

Individual dealer code – for key copies only from dormakaba approved locksmiths

Ergonomic reversible key – can be inserted from both sides

No sharp corners or edges – no tears in clothes and bags

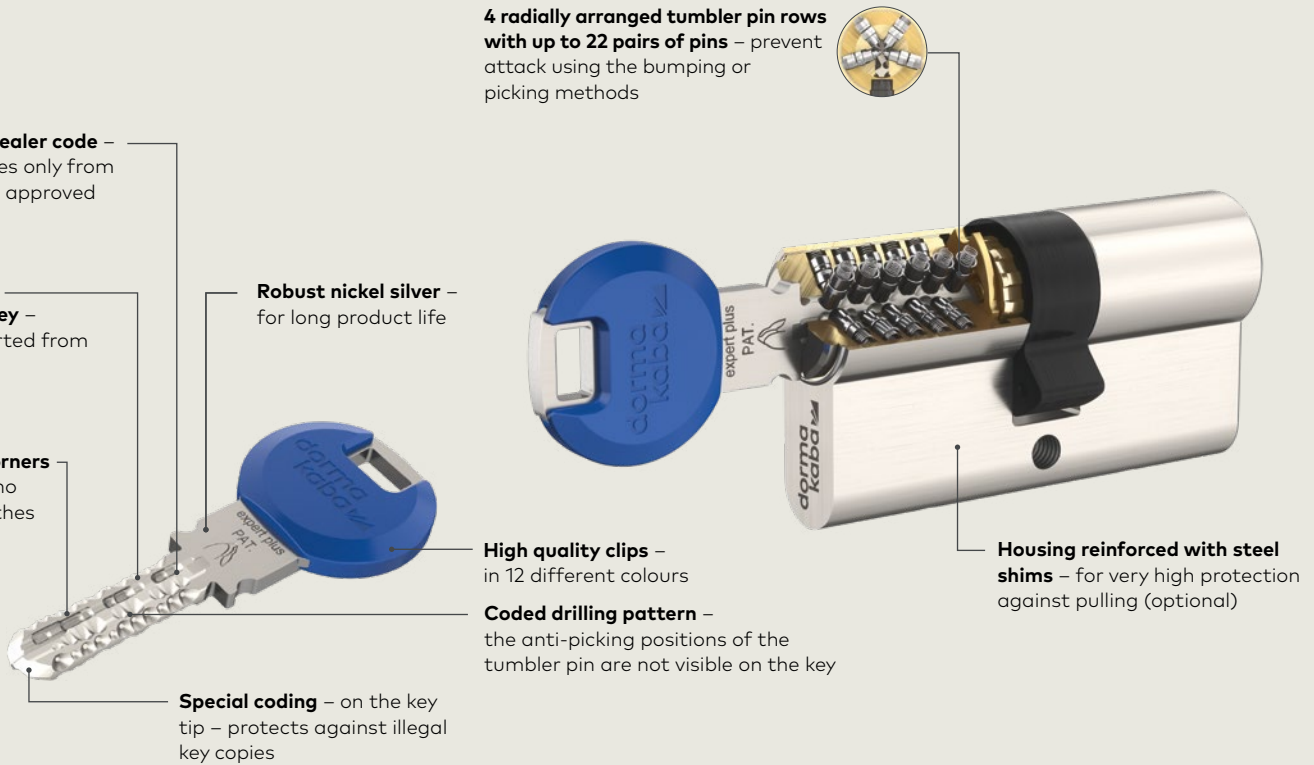
Robust nickel silver – for long product life

High quality clips – in 12 different colours

Coded drilling pattern – the anti-picking positions of the tumbler pin are not visible on the key

Special coding – on the key tip – protects against illegal key copies

Housing reinforced with steel shims – for very high protection against pulling (optional)



expert plus reversible key system

The dormakaba expert plus reversible key system can be customised for the customer on site by authorised local locksmiths. They are therefore also the sole point of contact for key copies. The system expert plus offers superior protection and convenient operation for individual locking or medium to large master key systems. It is ideal for securing and organising access for private homes, apartments or small to medium-sized businesses.

Secure

- High level of security through compliance with relevant standards, for example EN 1303 and DIN 18252
- Long-term protection by European patent EP2890856B1*
- Technical construction protects against the most common opening methods

Convenient

- Reversible key without sharp edges can be inserted from both sides
- Only one key for the user with keyed-alike lock cylinders or in a master key system

Flexible

- Personalised on site for the customer by the authorised local dealer
- Flexible in its use with individual locking and medium to large master key systems
- Optional security elements for even greater protection
- Can be combined with electronic access systems from dormakaba

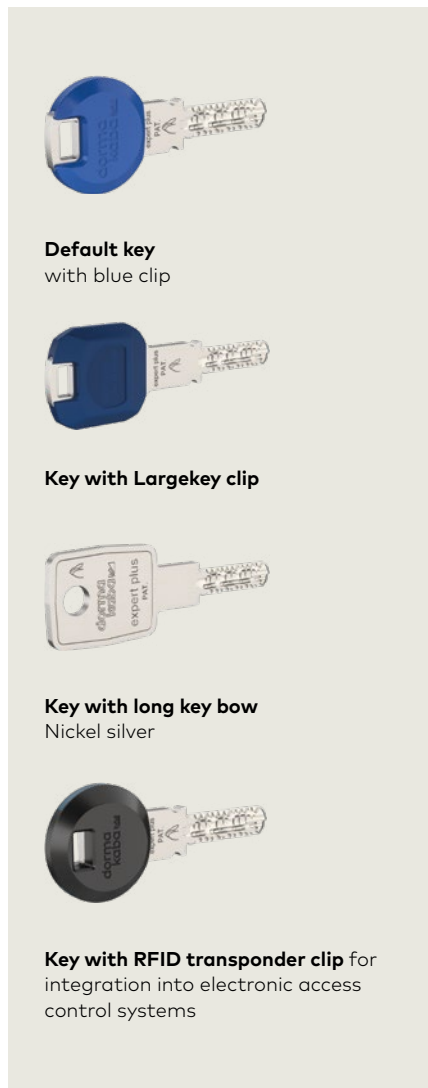
*Not valid in all countries – see worldwide.espacenet.com for details

Certified security and a multitude of possibilities

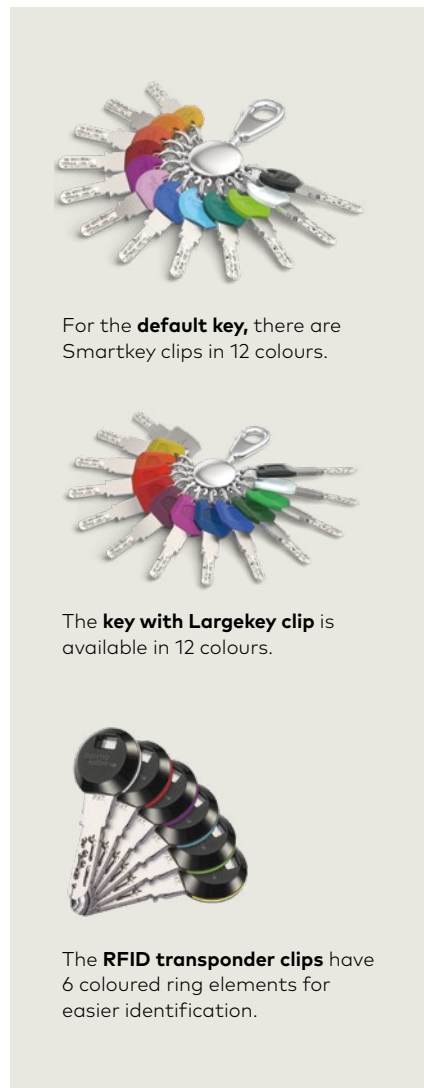
Certificates

- EN 1303 Key Related Security Grade 6 and Attack Resistance Grade D for versions with steel reinforcement in the housing
- Safety standards/Certificates (expanded):
 - DIN 18252 Grade C and D
 - VdS Grade B+ and BZ+ for corresponding special design
- Fire protection: Lock cylinder tested according to EN 1634-1 and EN 1634-2

Different types of keys with different shapes and functions



Colours as a visual aid



Free choice of lock cylinders

The cylinder programme features a wide selection of types to choose from. You can also integrate, for example, cylinder for cabinet locks, key-operated switches or lift controls into the system. Choose between various cylinder surfaces to match your design.

Any questions? We would be happy to answer any questions you may have.

dormakaba International Holding AG | Hofwisenstrasse 24 | CH-8153 Rümlang | T +41 44 818 90 11 | info@dormakaba.com | www.dormakaba.com

Added value upon request:

Special functions

If you have very specific requirements for the complete master key system or individual doors, take a look at our comprehensive range of special functions and special designs. For more details on this, please refer to the Special functions for reversible key systems brochure.

Special functions at a glance:

- **Temporary access for service personnel?**
Simply by turning the key!
Service function (SAT)
- **Key left in the lock?**
Not a problem!
Lock cylinder with key override on both sides (BSZ)
- **Cold and damp outside?**
Everything dry inside.
Thermally insulated lock cylinder (TIC)
- **Lots of dust in the air?**
But not in the lock cylinder.
Dust and weather protection (SSW)

Our Sustainability Commitment

dormakaba is committed to foster a sustainable development along our entire value chain.

In order to give quantified disclosures of a product's environmental impact and its ecological footprint, dormakaba provides Environmental Product Declarations (EPDs).

Please download the EPD and read more about our sustainability commitment [here](#) or use the QR code provided.



Environmental product declaration: EPD

- Declaration number:
EPD-DOR-20210182-CBA1-EN
- In line with ISO 14025 and EN 15804+A2
- Publisher and declaration holder:
Institut Bauen und Umwelt e.V.

Subject to change without notice.
WN 05530551532, 12/21