

F7 Multi



TECHNICAL FEATURES

- Cylinder body and plug made of brass in the standard version matt nickel-plated
- Suitable for installation in fire doors
- Encryption pins in stainless steel
- Counterpins in brass
- Springs in stainless steel
- Euro-profile cylinder (norm)
- Cam made of sintered steel
- Cam in min. 30° position (according to DIN)
- In each plug are 2 picking-resistant counterpins
- The drilling protection consists of a hardened steel pin in the cylinder body

PRODUCT

The F7 Multi cylinder is an entry-level vertical key system. The F7 Multi is available in keyed different, keyed alike versions and can be used primarily for medium to large master key systems, which are accessible to everyone.

APPLICATION

The F7 Multi with a large number of different mechanical profiles available, combines excellent potential for the creation of master key systems according to the security standards.

VERSION

Available in compact and modular design as:

- single profile cylinder
- double profile cylinder
- pre-arranged for knob
- knob cylinder

F7 Multi

HIGHLIGHTS

- F7 Multi has 6 encryption pins made of wear-resistant special brass, per each locking side
- The trademark protection is registered at the Patent and Trademark Office. The protected lettering TCR is located as a cross-section in the key profile
- A anti-pick protection is integrated in the profile cylinder
- The surface of the cylinder body is matt nickel-plated or brass as standard
- Two overlapping profile ribs of the plug increase the security of the profile cylinder against unauthorised openings (paracentric key profile)
- The keys are made of nickel coated brass

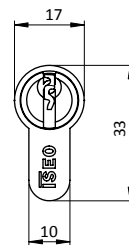
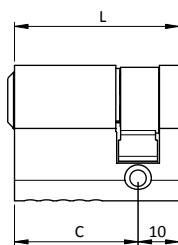
Optionally selectable features:

- emergency and danger function

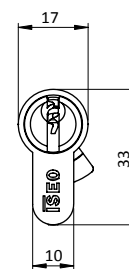
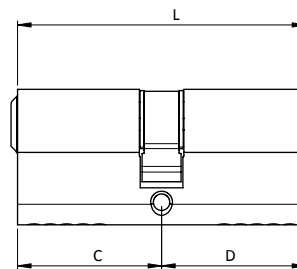
STANDARDS

Compact and modular version:
DIN EN 1303: 2015-08
116101B101C1610

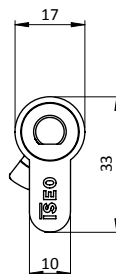
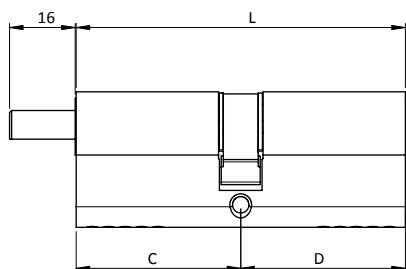
F7 Multi



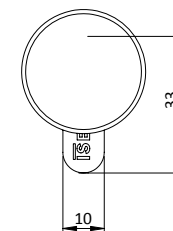
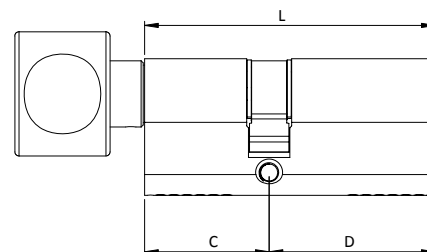
Single profile cylinder



European double profile cylinder



Pre-arranged for knob



European double profile cylinder. Round knob